

CLEARFIL MAJESTY™ ES-2 Universal shades

INTELLIGENT SIMPLIFICATION

For all direct composite restorations
One shade for posterior
Two shade options for anterior restorations
No opaquer required



CLEARFIL MAJESTY™ ES-2

Universal shade concept

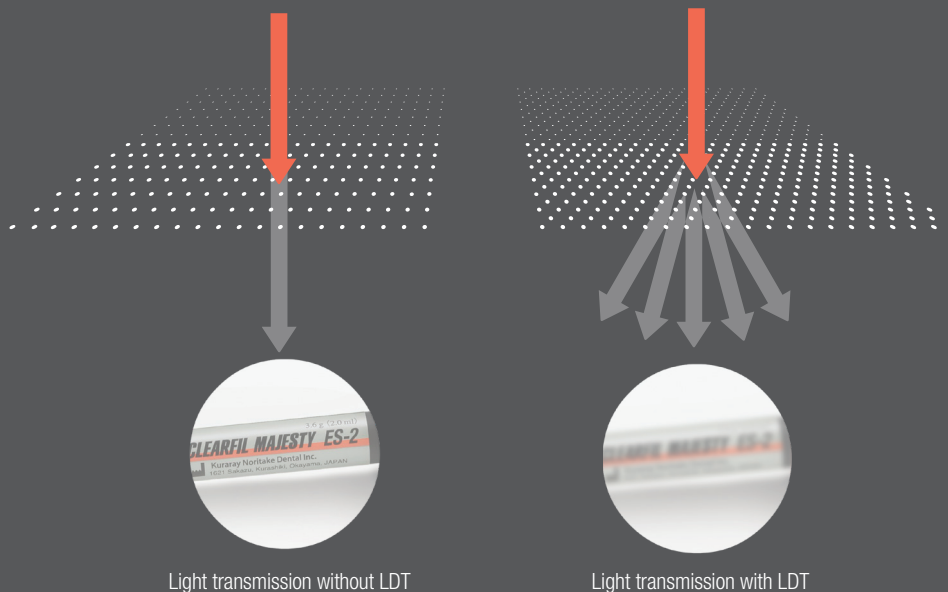
EFFORTLESS AESTHETICS

How many different shades of composite do you need to create appealing restorations in virtually every clinical situation?

If you opt for CLEARFIL MAJESTY™ ES-2 **Universal shade** concept, just a few shades will do the trick. A single universal shade is the go-to solution for all posterior restorations. In the aesthetically more demanding anterior region, there are two shade options to choose from. An extra white shade is additionally available.

NO OPAQUER NEEDED!

A blocker or opaquer is not needed – neither in the posterior nor in the anterior region for your regular cases. This is due to the material's specific level of translucency and the integration of Kuraray Noritake Dental's **Light Diffusion Technology (LDT)**, which makes the restoration distort light in a similar way tooth structure does. As a consequence, the material integrates easily and smoothly into the surrounding tooth structure and preparation margins become virtually invisible.



FOR YOU, THIS MEANS

- ✓ Simplified shade selection without a shade guide
- ✓ Efficient and comfortable procedure (single-shade technique, no blocker or opaquer)
- ✓ Fewer potentially error-prone work steps for consistent, predictable results
- ✓ Appealing outcomes that last

CLEARFIL MAJESTY™ ES-2 Universal offers the same superior mechanical properties as its predecessors:

Flexural Strength:	118 MPa
Filler Load:	78 wt%
Compressive Strength:	347 MPa
Volumetric Shrinkage:	1.9 %
Curing Depth:	2.0 mm
Working time under ambient light:	270 sec.

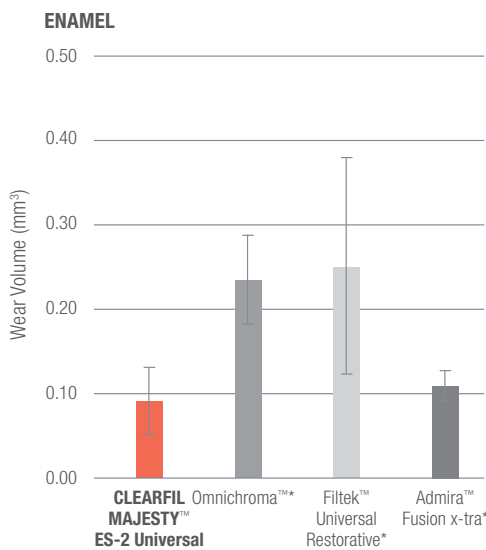
Source: Kuraray Noritake Dental Inc.

ONE SHADE FOR POSTERIOR

The great majority of all direct composite restorations are created in the posterior region, where the following properties are particularly important:

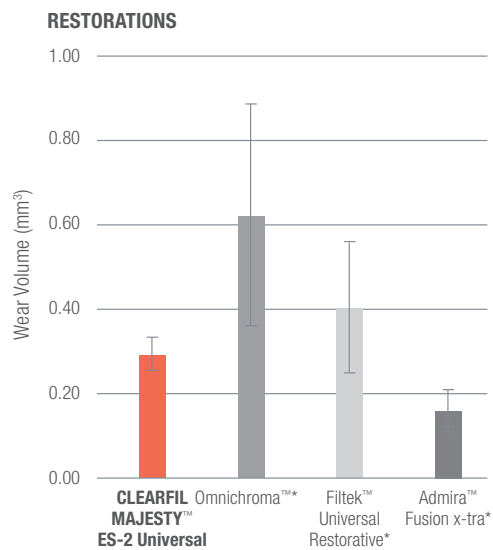
- favourable wear resistance properties
- good optical integration
- low shrinkage stress

CLEARFIL MAJESTY™ ES-2 Universal accomplishes this task with one universal shade used independent of the tooth colour.



CLEARFIL MAJESTY™ ES-2 Universal (red) shows less wear of enamel antagonist than competitors' materials tested.

Test Conditions: Leinfelder wear test at room temperature in water.
Load: 7.9 kg/cm², 400,000 cycles.
Antagonist: bovine enamel, polished with #3000 paper. Material: polished with #3000 paper.



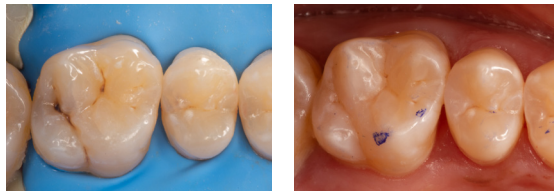
The wear of CLEARFIL MAJESTY™ ES-2 Universal (red) are shown to be less than the wear of Omnichroma (Tokuyama) and Filtek Universal Restorative (3M).

Source all graphs: Kuraray Noritake Dental Inc.

*Not a trademark of Kuraray Noritake Dental Inc.

CLINICAL CASE POSTERIOR

Credits: Photos by Dr Piotr Marchewka

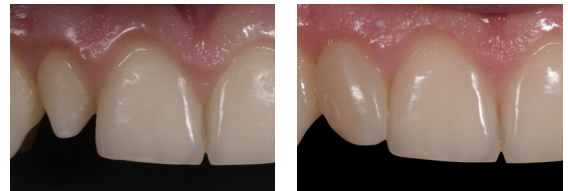


Before

After

CLINICAL CASE ANTERIOR

Credits: Photos by Dr Luca Dusi



Before

After

ANTERIOR RESTORATIONS: THE SIMPLE PATH TO BEAUTY

In the anterior region, any visual flaws and discrepancies in colour, translucency or surface structure between teeth and restorations are immediately visible, compromising smile aesthetics. This is why a composite used to restore anterior teeth should offer

- the right level of translucency
- a natural, lasting gloss
- a precise colour match to blend in virtually seamlessly








With two shades of CLEARFIL MAJESTY™ ES-2 Universal designed for the anterior region, Kuraray Noritake Dental is able to fulfil these specific requirements. The outcome speaks for itself!

COMBINING AESTHETICS AND SIMPLICITY

As an aesthetically driven and user-oriented company, Kuraray Noritake Dental aims at offering products that support simplified treatment approaches while ensuring highly aesthetic outcomes. In line with this philosophy, CLEARFIL MAJESTY™ ES-2 Universal shade concept is comprised of the smallest possible shade range required for each region to support high-level aesthetics.

SHADE COMPARISON TABLE

Universal shades are designed to cover all cavity classes with a few shades based on the following chart:

SHADE CATEGORY	CAVITY CLASS	SHADE				
		A1 B1, B2	A2 D2, C1	A3 C2, D3	A3.5 B3, B4	A4 C3, C4
Universal	I 	U Universal				
	II 					
	III 	 Universal Light		 Universal Dark		
	IV 					
	V 					

For clinical cases in the anterior region that require high lightness/value, we offer a dedicated white shade (UW).

PRODUCT ASSORTMENT

CLEARFIL MAJESTY™ ES-2 Universal SYRINGES

- #3181-WD CLEARFIL MAJESTY™ ES-2 Universal (U)
- #3183-WD CLEARFIL MAJESTY™ ES-2 Universal Light (UL)
- #3184-WD CLEARFIL MAJESTY™ ES-2 Universal Dark (UD)
- #3182-WD CLEARFIL MAJESTY™ ES-2 Universal White (UW)



CLEARFIL MAJESTY™ ES-2 Universal PLT

- #3191-WD CLEARFIL MAJESTY™ ES-2 Universal (U)
- #3193-WD CLEARFIL MAJESTY™ ES-2 Universal Light (UL)
- #3194-WD CLEARFIL MAJESTY™ ES-2 Universal Dark (UD)
- #3192-WD CLEARFIL MAJESTY™ ES-2 Universal White (UW)



Kuraray Noritake Dental Inc.

1621 Sakazu, Kurashiki, Okayama 710-0801, Japan

Website www.kuraraynoritake.com

- Before using this product, be sure to read the Instructions for Use supplied with the product.
- The specifications and appearance of the product are subject to change without notice.
- Printed colour can be slightly different from actual colour.

CLEARFIL and CLEARFIL MAJESTY are registered trademarks or trademarks of Kuraray Co., Ltd.